



Dear participants!

We thank you for your desire to participate in the upcoming 16th international **SYMPOSIUM ON BIOINFORMATICS RESEARCH AND APPLICATIONS (ISBRA)**, which will be held from December 1 to 4, 2020 in an ONLINE format.

It is important for us that your participation in the Symposium is comfortable and productive, so we have prepared this memo with information about important organizational and technical aspects of participation.

REGISTRATION FOR THE SYMPOSIUM

To participate, you need to register on the site <https://isbra.confreg.org> and pay for your participation.

Click the REGISTER button on the right panel of the site.

You will be taken to the registration page, where you need to confirm your consent to the User agreement and consent to the processing of personal data.

Fill out the registration form that opens.

Pay for participation.

PERSONAL ACCOUNT

After successful registration, you will be redirected to Your Personal account on the site.

In your personal account, you can go to the online broadcast of the event and read the program again.

Your certificates will also be placed in your Personal account after the event.

LOG IN TO THE CONFERENCE

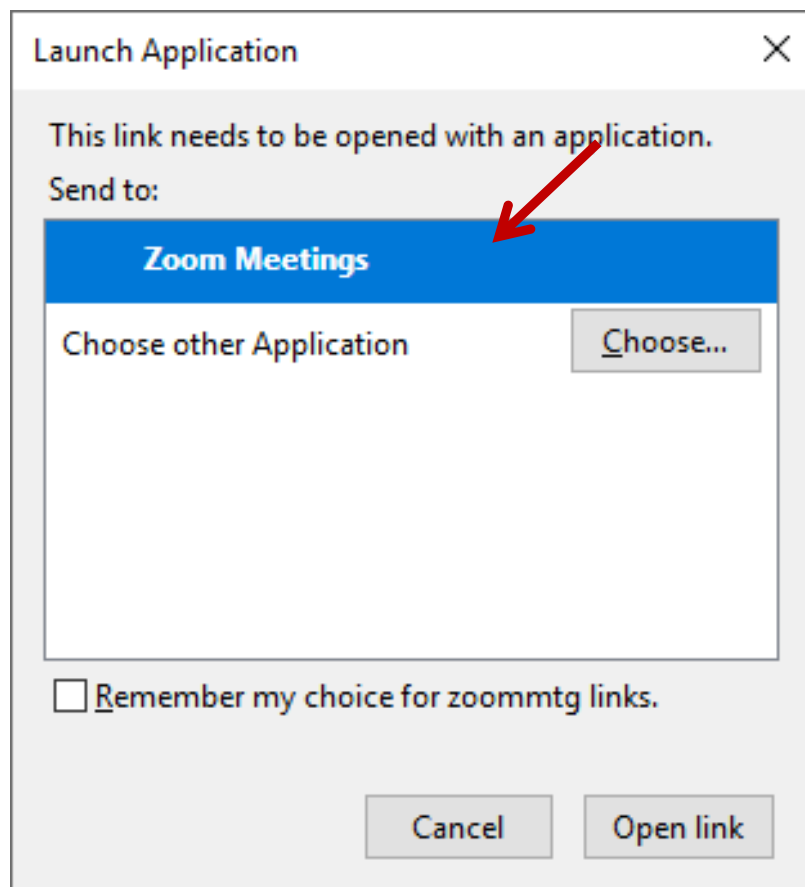
On the main page in your personal account, you will see screen-buttons to go to the broadcast.

1. For a more convenient transition to broadcasts, we recommend installing the Zoom app on Your computer in advance: <https://zoom.us/download> .



If you haven't done this, the program will prompt you to install the app on your computer. All you have to do is confirm the installation and open the app.

2. When you click on the corresponding section button, you will be taken to the Zoom opening page



3. Click **Open link** at the bottom of the dialog box.



4. Enter your last and first name, as well as your email address in the window that appears.

IMPORTANT! Be sure to enter the email address you entered when registering on the Symposium website every time you log in to the virtual conference room.

Sign In

Email address

Password

Sign In

[Forgot password?](#)

Stay signed in

5. Click the **Log in to the webinar** button.

IMPORTANT! It is not recommended to watch the broadcast via the browser (only through the Zoom app), because in this case there may be problems with the display of the presence control and testing Windows.

MAIN VIEW

1. During presentations, you can simultaneously see the speaker in the window on the right and his presentation in the window on the left.

SOUND AND VIDEO

1. Please note that audio and video are disabled by default for participants.
2. The participants have no opportunity to turn on the microphone or camera.



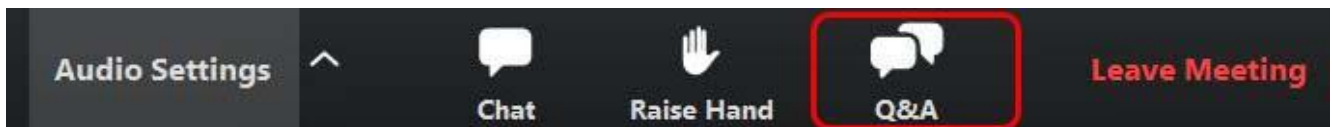
MAIN TOOLS

1. The Main tools that you can use to communicate during the conference are located in the down panel.



2. The **Chat** button allows you to write a message to the moderator if you have any organizational or technical questions.

3. **Questions and answers** – if you want to ask a question to the speaker, use this function and enter Your question in the window that appears.



END OF THE SECTION AND MOVE TO THE NEXT HALL

The broadcast will end automatically.

After completing the section, go to the broadcast page in your Personal account and click on the screen-button to enter the next section.